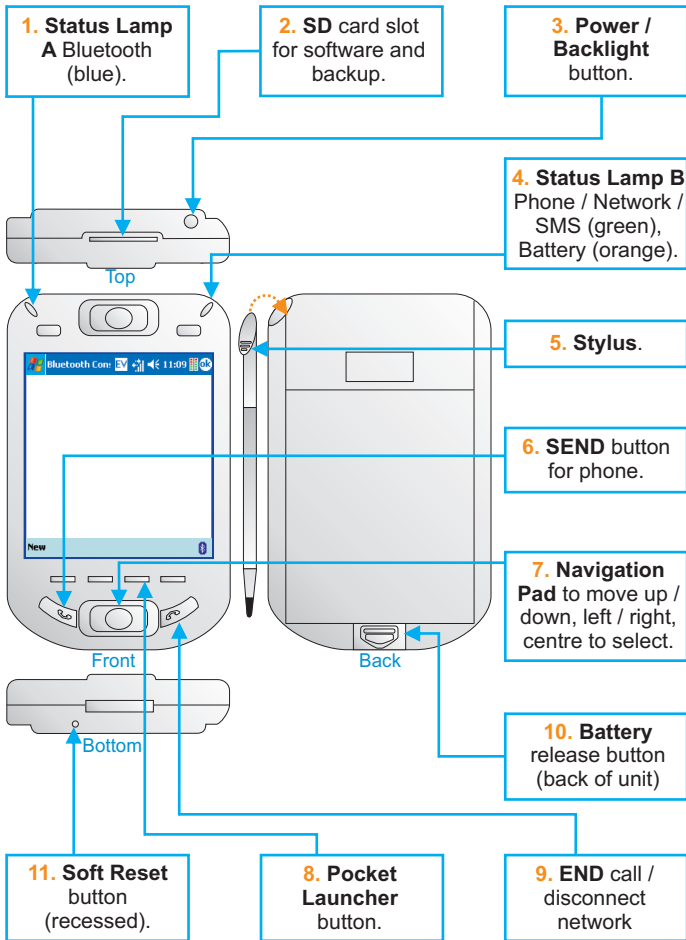
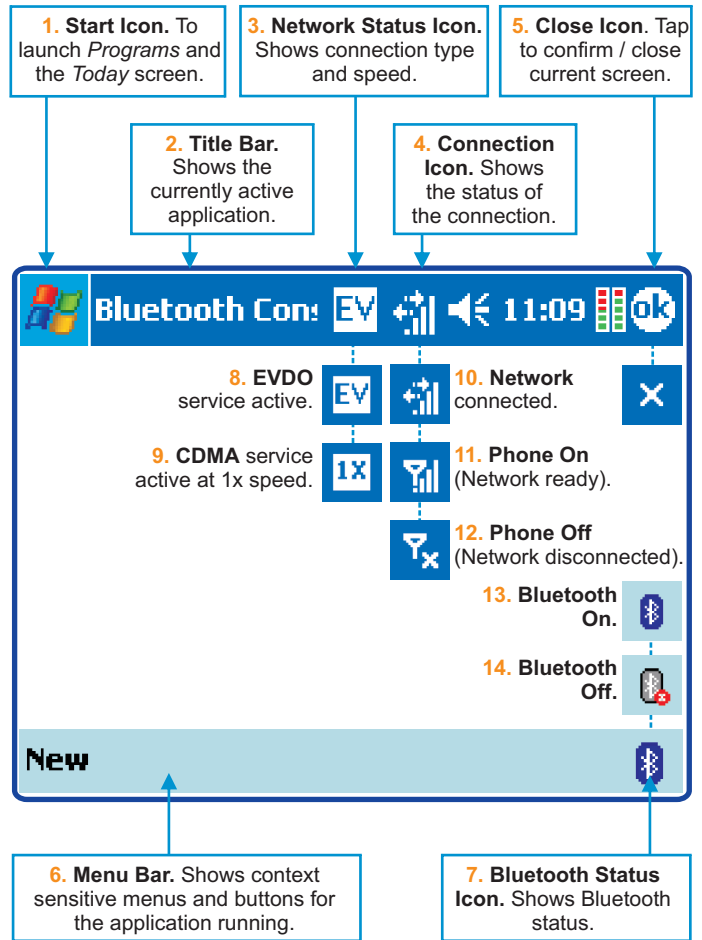


Mobile RAMM Solutions

A. PDA Controls



B. Screen Icon / Status

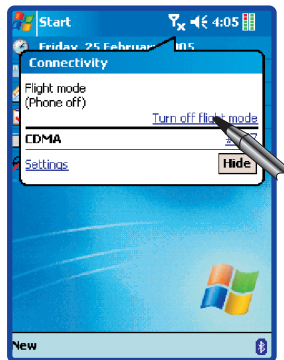


C. Starting Pocket Launcher and Pocket RAMM

1. Is the PDA on and connected?

You should see the EVDO (or CDMA) icon, with the network connected icon on the title bar.

If you see the **Phone Off** icon tap it to **Turn off flight mode** (right).



2. Start Pocket Launcher.

Press the **Pocket Launcher Button**. The unit will display the PIN screen.

3. Switch on the GPS Unit.

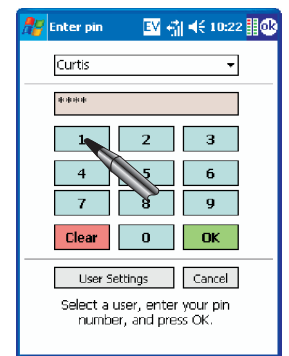
Hold down the power button for 3 seconds until the blue light starts flashing.

4. Log in.

Select your Login Name, enter your 4 digit PIN and tap **OK**.

Pocket Launcher will start and automatically link to the GPS device.

You'll see **GPS: Acquiring** at the bottom of the screen.



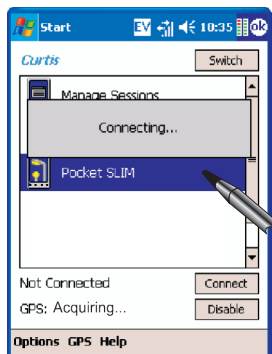
5. Launch Pocket RAMM.

Tap **Pocket RAMM**.

Pocket Launcher automatically dials the Data Connection and connects to the Hosting Citrix Metaframe server.

You'll now see the Pocket RAMM window.

Tap a button to begin working with the selected Pocket RAMM function.

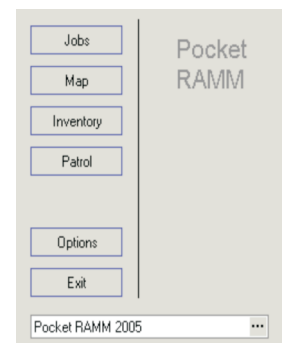


6. When you finish, exit Pocket RAMM and disconnect.

When you finish your session, use the **Exit** button to close Pocket RAMM.

Hold the **END** button for 5 seconds to end the data connection.

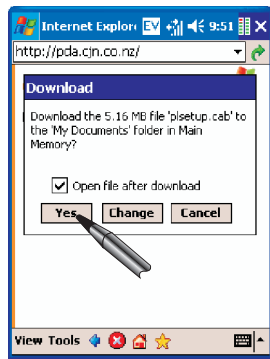
Your phone can still receive calls. Pocket Launcher can remain on the screen to resume work later.



D. Pocket Launcher Software and Bluetooth GPS Setup

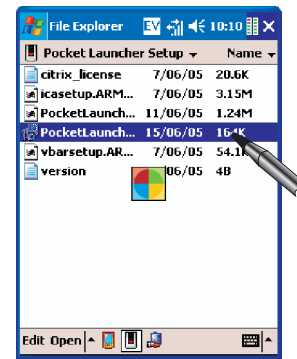
1. You can install the Pocket Launcher Software from the Internet OR from an SD card. To use Internet Explorer:

- Ensure you're connected to the Internet  and tap **Start > Internet Explorer**.
- Go to pda.cjn.co.nz.
- Tap the link to the **Latest Pocket Launcher Installer**.
- On the Download dialog box make sure **Open file after download** is ticked, and tap **Yes**.



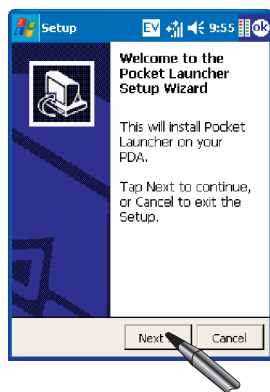
To run the setup from an SD memory card, ensure the card is in the SD slot (A2).

- Tap **Start > Programs > File Explorer**.
- Tap the drop-down arrow next to **Show** and select **My Device**.
- Tap **Storage Card > CJN Technologies > Pocket Launcher Setup** to navigate to the relevant folder on the SD card, and tap the **PocketLauncherSetup.exe** file.

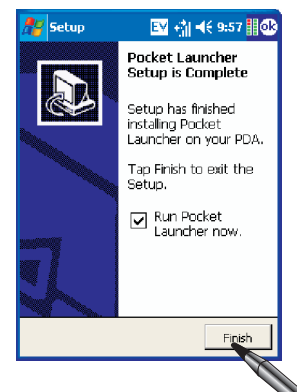


2. The Pocket Launcher Setup Wizard will now begin.

- Tap **Next**.
- Agree to the Citrix Licence Agreement and tap **Next**.
- Pocket Launcher will now extract files and begin the installation.

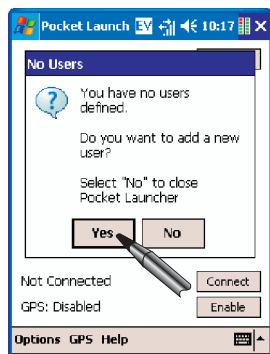


- Set the Date and Time if necessary and tap **Next**.
- You can also **Backup** the setup to the SD card or tap **Skip Backup**.
- When the wizard is complete, ensure **Run Pocket Launcher now** is ticked (default) and tap **Finish**.



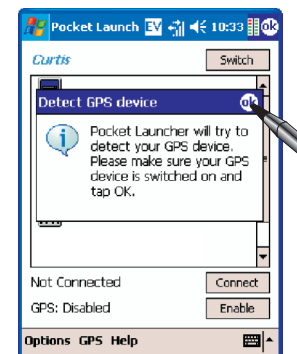
3. If this is a fresh installation, you'll be prompted to set up a new user. If not, go directly to 4.

- Tap **Yes**, follow the prompts to enter your **Username** and **Password** and tap **OK**. If you don't remember your username and password, please contact us (F).
- Enter a 4 digit **PIN** number of your choice and tap **OK**.
- You will be asked to re-enter it to confirm, and tap **OK**.




4. If this is a fresh installation, you'll be prompted to set up a new GPS Device.

- Make sure the bluetooth GPS is on and tap **OK**. Pocket Launcher will search for a device, and list it.
- Select the device and tap **OK**.
- After connecting, tap the relevant Pocket application to begin working (C). If you can't connect, go back to step 3 and login afresh.



E. Troubleshooting

1. I can't connect to the Internet, and I see **Cannot Connect** or **Connection Failed** errors.

- The phone may be off (Flight Mode may be on). Tap  to bring up the connection. Tap **Turn Off Flight Mode** to connect.
- The Network may be temporarily out of service. Please try again in a short

while or contact us for more information (F).

- Your Internet settings may need checking - for example your username / password or server settings. Please contact us for support (F).

2. I can't connect to the Bluetooth GPS unit, and I see a **GPS Error** message.

- The Bluetooth unit may be off. See (C3).

3. Pocket Launcher says **Connecting** but does not connect to the GPS unit.

- The Bluetooth unit battery may be low. Replace the battery and try again.

4. I can't find Pocket Launcher in the Program list.

- The Pocket Launcher software may need to be installed. See (D) above.

- The PDA's battery may have been depleted and the software wiped. The Pocket Launcher software needs to be reinstalled. See (D).

5. I can't remember my PIN number.

- Start Pocket Launcher, delete your user profile and add a new one. You'll need your password - If you don't know it, call us for help (F).